

Terraso Design Team: Digital Tools to Transform Landscapes

Terraso provides open source software to help local leaders around the world make their communities and landscapes more economically and ecologically sustainable.

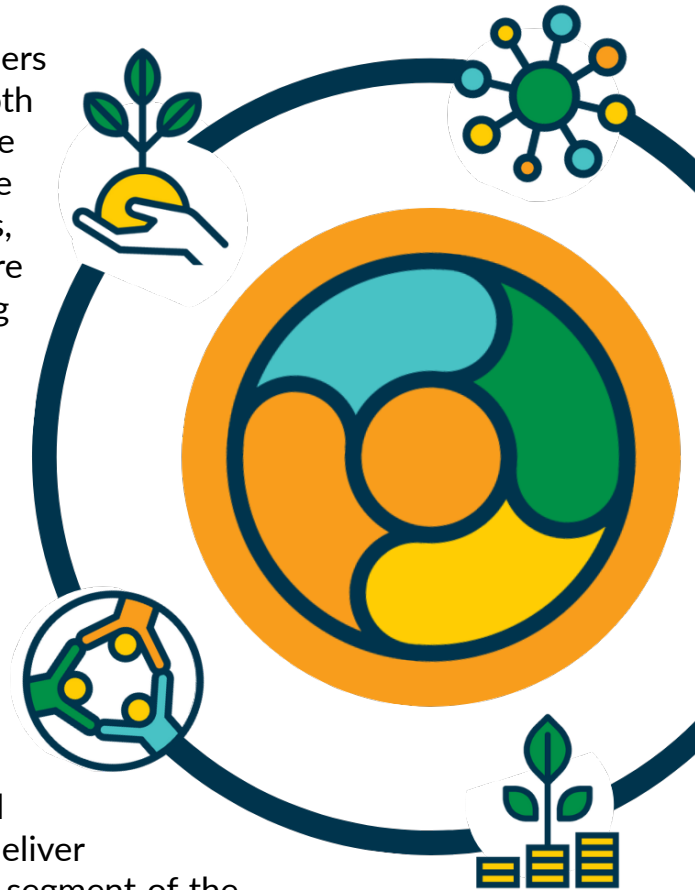
Climate change discussions are too often confined to the international and national levels. However, local communities make most of the decisions that impact the water quality, soil health, biodiversity and economies of their landscapes. These local leaders often lack access to the information and tools to make science-driven, climate-smart decisions that support both environmental preservation and economic growth for their communities.

Our work is rooted in the belief that local landscape leaders and their communities will be more successful from both an environmental and economic standpoint if we provide better access to the needed knowledge and tools. In the face of climate and subsequent development challenges, we are developing a collection of open-source software applications and services as well as curating the missing tools and infrastructure that empower communities to chart their own futures. We aim to enable communities in landscapes around the world to access the knowledge needed to plan the future of their region and to secure the necessary capital (business investment, philanthropy and government funding) to carry out those plans. Global decision-makers to support policies advancing integrated landscape management (ILM).

We expect Terraso to become an indispensable part of the software and data infrastructure for the global response to the unsustainable exploitation of natural resources. We intend not simply to build software and deliver data, but to profoundly change behavior across a large segment of the planet.

Co-Design Process

The Terraso team has spent hundreds of hours consulting more than a dozen landscapes on six continents. The team seeks to provide value to our partners in every conversation, not only through active listening to understand the challenges they face, but also through advising and training on existing solutions and identifying and creating better ones when needed.



Landscape leaders have identified needs in several key areas where a scalable software solution has the potential to provide value:

- access to existing information: best science and best practices for pursuing ILM.
- capacity development: self-service resources to build capability within local communities
- financial resources: better guidance to appropriate sources and methods for raising necessary capital to support project plans
- data resources:
 - data collection tools appropriate for local use
 - data sharing and custody tools to ensure data preservation
 - data analysis and visualization tools to build understanding
 - maps and geospatial information: the ability to create maps, access existing datasets, and combine them with locally collected data.

Building Story Maps



Our landscape partners frequently request tools and resources that allow them to share compelling narratives with the broader world as well as within their own communities. In response to this need, Terraso is creating a central hub to help landscape leaders combine local data and map-based storytelling as a way to share victories and challenges throughout their journey. The Terraso team is working with the [ANEI](#) cooperative in Colombia and the [Rupununi](#) landscape in Guyana to build “story maps” which combine text, images, video, and interactive 3-D maps to illustrate the possibilities of a sustainable future.

Terraso Platform

The Terraso Platform is in active development. Users on Terraso currently have the ability to:

- create landscape accounts, with a defining boundary, a description and shared files that can serve as a hub for information about a landscape
- create or join public and private groups for individuals with shared interests or goals
- access KoboToolBox, a powerful, open source data collection tool
- share data and files with other members of their landscape partnership as well as with the broader Terraso community
- create maps to help visualize and communicate shared data

Terraso supports and connects the key elements of the 1000 Landscapes integrated landscape action framework. As development progresses, users will gain access to new capacity building, storytelling, finance, and community-building tools and resources generated together with the other 1000 Landscapes design teams.

Design Team Participants

Amaya Webster, Tech Matters

Derek Caelin, Tech Matters

Hana Lee, Tech Matters

Steve Francis, Tech Matter

Lisa Markslag, EcoAgriculture Partners

Lousie Buck, EcoAgriculture Partners

Tom Derr, EcoAgriculture Partners

Patricia Bon, EcoAgriculture Partners

Corinne Moser, Rainforest Alliance

James Githuku, Rainforest Alliance

Deesha Chandra, Landscape Finance Lab

Robin Vos, Commonland

If you are interested in learning more, contact Amaya Webster at amaya@techmatters.org