

The 1000L hub: Harmonizing Our Efforts to Support Thriving Landscape Partnerships

The 1000L hub brings together the initiative's core partners to build new alliances, integrate learnings across organizations, align communications and support decision making to provide landscape partnerships with the most effective and accessible resources and solutions.

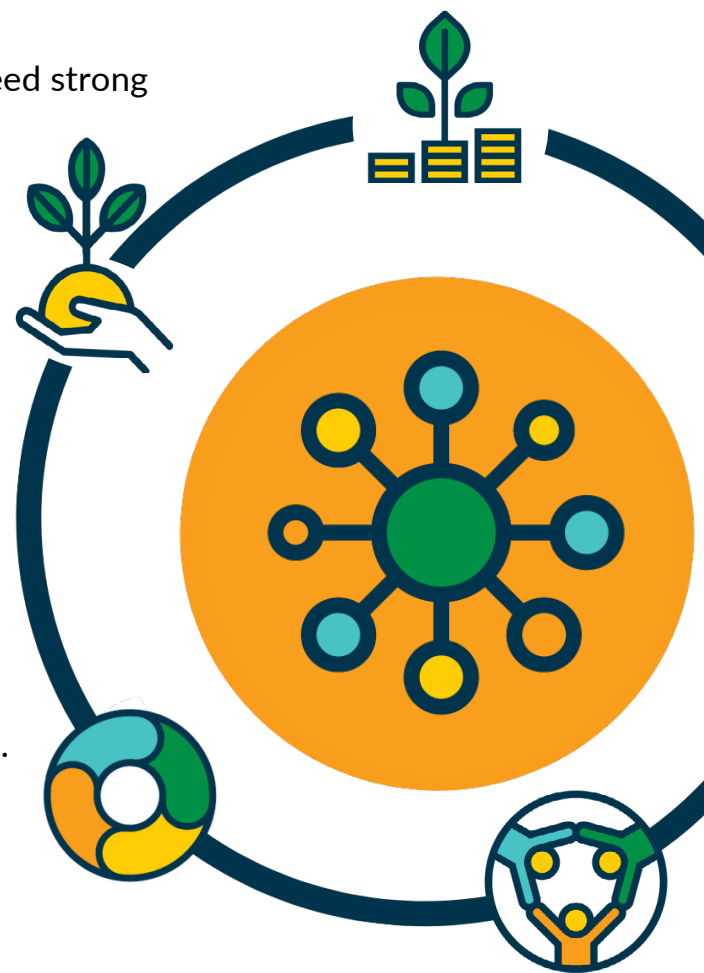
To scale landscape approaches and achieve sustainability, organizations and institutions must align their efforts towards a shared vision to build effective long-term partnerships that safeguard biodiversity, combat climate change and boost local economies. The 1000L hub works to harmonize action across the initiative's several focus areas to foster inclusive, meaningful collaboration to help build, strengthen and sustain effective landscape partnerships.

The hub has seven key functions that support the 1000L partners, design teams and advisory board:

Initiative coordination. Seemingly disparate groups need strong coordination to collaborate. The tools, services and networks that 1000L partners co-develop are most effective when used in concert. The hub supports integrating partner activities to ensure that every landscape leader can benefit from them. By pooling and organizing these resources and activities, landscape partnerships can access an integrated and diverse collection of materials that best suits the needs of their landscape.

Partnership convening, development and facilitation. Partner organizations and the landscapes where they work are the foundation of our initiative. The hub recruits and mobilizes new partners and facilitates engagement to support organizations in building and strengthening their landscape partnerships. Recognizing that every organization has its own unique skills and roles, the hub seeks to bring partners together to highlight respective strengths, integrate efforts and collectively amplify positive impact.

Governance support and strategic planning. A steering committee guides 1000L, and representatives from each of the [six core partners](#) who comprise the body oversee the initiative's long-term success. The [Landscape Leaders Advisory Group \(LLAG\)](#) serve as an additional consultative group, using their strong experience leading, convening and driving landscape partnerships to advise the initiative and its overall strategy. The hub supports both groups in raising key issues, making informed decisions and providing strong guidance about the challenges and opportunities facing the initiative. The hub works closely with the steering committee, the LLAG and the design teams in strategic planning and the development of the 1000L scaling strategy.



Support for resource and donor mobilization. 1000L's ambitious agenda requires collaboration to mobilize the resources needed to drive transformative change for landscapes. The hub coordinates fundraising across 1000L to ensure we generate solutions toward our collective goals rather than compete for funds. The hub also plans for and manages the initiative's resources to maximize their benefit to landscapes.

Communications, outreach and advocacy. To unlock true transformation for people and nature, landscape approaches need to become more commonly recognized as a key solution for achieving long-term change at scale. The hub leads communications, outreach and advocacy for 1000L to build recognition for the initiative and landscape solutions through multimedia storytelling that demystifies integrated landscape management. The hub focuses on telling the stories of landscapes in action worldwide to showcase how local communities and leaders are driving transformation while also highlighting where they need support to further their goals. The hub also supports outreach and advocacy efforts at major global conferences and events to promote 1000L and landscape approaches as one of the best solutions for achieving the sustainable development goals.

Monitoring, evaluation and learning. Measuring our outcomes and progress towards achieving our ambitious goal requires an innovative monitoring, evaluation and learning (MEL) framework capable of recognizing and assessing system change. The hub is responsible for developing and managing a MEL system that drives constant learning and adaptation while it measures our progress towards our goals. This lean and agile system will use mixed methods to calculate the value 1000L tools and services provide to landscape partnerships to help them implement ILM. The 1000L MEL system will also assess outcomes in the broader ILM-enabling environment by measuring how business practices, the financial sector, government policy and other institutions change.

Knowledge synthesis. 1000L is constantly generating new knowledge and learnings through our work with landscape partnerships and enabling institutions to help inform landscape practitioners, businesses, policymakers, funders and academics. In close collaboration with the 1000L design teams, technical partners and landscape co-design partners, the hub synthesizes learnings to generate knowledge products that can inform and guide others in the global landscape community.

Design team participants

EcoAgriculture Partners
Rainforest Alliance
United Nations Development Program
Conservation International
Tech Matters
Commonland

If you are interested in learning more, contact Tom Derr at tderr@ecoagriculture.org

